



# REDI Monitor

Benchmarking Faith-Friendly Workplaces  
RELIGIOUS FREEDOM & BUSINESS FOUNDATION

## FORTUNE 500 & FTSE 100: EMERGING TRENDS IN FAITH AND CORPORATE CULTURE

*A Longitudinal Study (2022-2026)*

### 7th Annual Report

Faith and belief are among the most deeply held dimensions of human identity.

Respecting faith and beliefs is not about promoting any particular belief. *It is about creating an environments where people of all beliefs - including those with no religious affiliation - are treated with dignity, respect, and fairness.*

When employees feel respected in this dimension of identity, *they are more likely to experience trust, belonging, and engagement.*

Brian J. Grim, Ph.D.  
Melissa E. Grim, J.D.



# About

## About THE REDI MONITOR & INDEX

The Faith-Friendly Workplace 'REDI' Monitor annually tracks whether religion and belief is visible as a part of workplace belonging initiatives on public websites of companies on the U.S. Fortune 500 list and companies listed on the FTSE 100 Index as well as others on occasion, such as the BSE in Mumbai. Companies on the US Fortune list have been annually monitored since 2020, beginning with the Fortune 100, then the Fortune 200 in 2021, and the full Fortune 500 since 2022. The FTSE 100 have been monitored annually since 2024.

The Faith-Friendly Workplace 'REDI' Index is an international benchmarking survey that companies use to track their progress in (and be recognized for) embracing religion and belief (including non-theistic beliefs) as an integral part of their overall commitment to best practices in workplace belonging and inclusion.

## About the Religious Freedom & Business Foundation

The Religious Freedom & Business Foundation (RFBF), founded in 2014 by Dr. Brian Grim, is the preeminent organization dedicated to educating the global business community, policymakers, non-government organizations and consumers about the positive power that faith and religious freedom for all (including those with no religious faith) have on workplaces and the economy. Our initiatives are underpinned by our extensive research.

RFBF is a non-partisan, nonpolitical, registered 501(c)3 non-profit organization in the United States with partners and work worldwide. It is not a faith-based organization and works with multiple faiths. It does not take a position on current political debates.

## About the Authors

Brian J. Grim, Ph.D., holds a doctorate in quantitative sociology from Pennsylvania State University. He has extensive profession experience in China, the former USSR, the Middle East, and India. Melissa M. Grim, J.D., his daughter, holds a law degree from DePaul University College of Law, and an M.T.S. from Boston University Divinity School. She also has degrees in philosophy and addiction counseling.

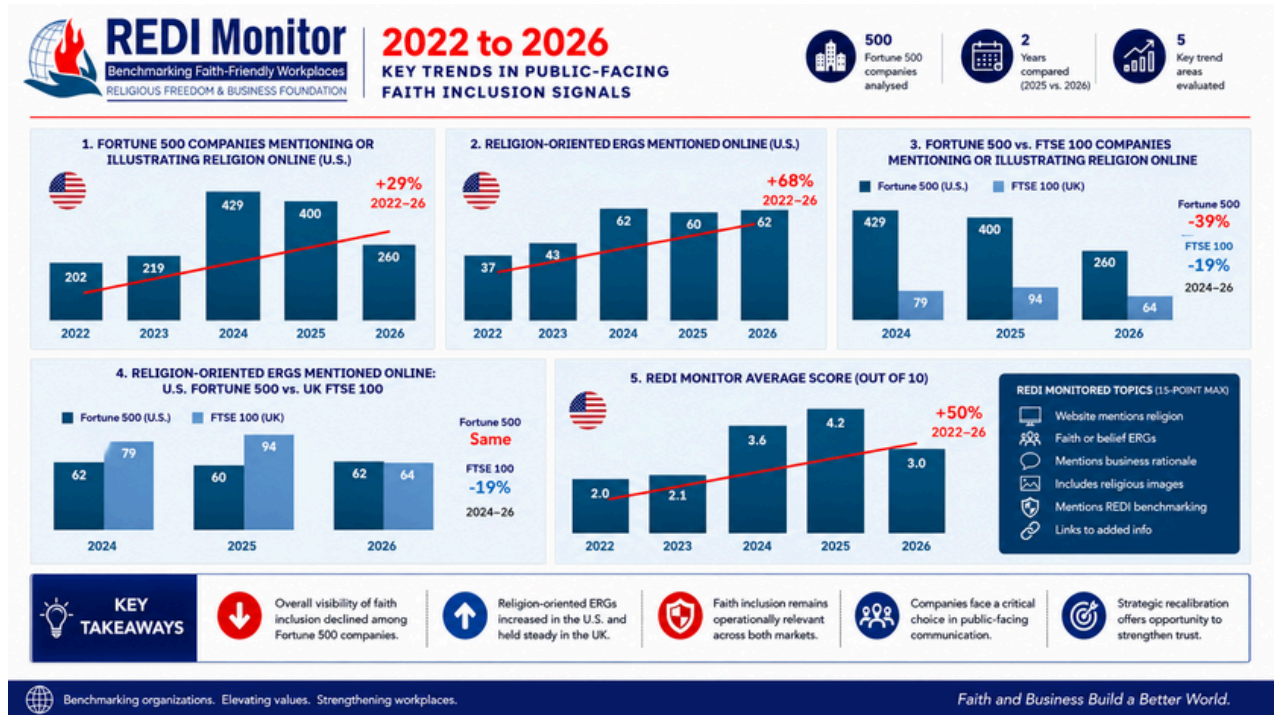


1A Perry Circle  
Annapolis, MD 21402 USA  
[contact@ReligiousFreedomAndBusiness.org](mailto:contact@ReligiousFreedomAndBusiness.org)  
[www.ReligiousFreedomAndBusiness.org](http://www.ReligiousFreedomAndBusiness.org)

# Table of Contents

<b>About</b> .....	1
<ul style="list-style-type: none"> <li>• About THE REDI MONITOR &amp; INDEX</li> <li>• About the Religious Freedom &amp; Business Foundation</li> <li>• About the Authors</li> </ul>	
<b>Table of Contents</b> .....	2
<b>Part A: REDI Monitor</b>	
Overview of Key Trends .....	3
Key Takeaways .....	4
Methodology Snapshot .....	4
Fortune 500 Trends (2022–2026) .....	5
U.S. vs. U.K. Public Visibility of Religion .....	6
Faith-Oriented ERGs: Diverging Momentum .....	7
Fortune 500 REDI Monitor Scores .....	8
Comparative REDI Scores: U.S. vs. U.K. ....	9
Conclusion: REDI Monitor .....	10
<b>Part B: Faith-Friendly Workplace ‘REDI’ Index</b>	
Faith-Friendly Workplace ‘REDI’ Index .....	11
2026 U.S. Honorees .....	12
2026 U.K. Honorees .....	13
REDI Index Award Takeaways .....	14
REDI Index Question Areas .....	15
<b>APPENDIXES</b>	
APPENDIX A: Why Faith-Friendly Workplaces Matter .....	16
Appendix B: U.K. REDI Monitor Results .....	17
Appendix C: U.S. REDI Monitor Results .....	19

# Overview of Key Trends



**Figure 1.** REDI Monitor Dashboard Summary: Public visibility declines while institutional indicators remain comparatively stable (2022–2026) | Religious Freedom & Business Foundation | May 20, 2026

The 2026 REDI Monitor reveals a major shift in how leading corporations publicly communicate religion and belief inclusion. Across both the Fortune 500 and the FTSE 100, public-facing references to faith and belief declined between 2025 and 2026, particularly in website language, visual storytelling, and supplemental resources.

At the same time, many underlying organizational structures, including faith-oriented ERGs, proved significantly more resilient than public communication patterns alone would suggest.

This distinction is central to understanding the broader trajectory of faith inclusion in corporate culture. Public signaling shifted quickly, while institutional commitment changed far more slowly. In short, companies appear to be reducing public-facing communication about faith inclusion while maintaining some underlying institutional structures.

# Key Takeaways

The implications of these trends are clear:

- Public-facing faith inclusion signals declined significantly in 2026
- Faith-oriented ERGs remained comparatively stable
- A divergence emerged between U.S. and U.K. corporate communication patterns

# Methodology Snapshot

The REDI Monitor analyzed public-facing workplace culture, diversity, belonging, and inclusion webpages of:

- All Fortune 500 companies (2022–2026)
- All FTSE 100 companies (2024–2026)

Six indicators were tracked:

- Website mentions of religion-related terms
- Faith or belief ERGs
- Business rationale for inclusion
- Religious images or videos
- Mentions of REDI benchmarking
- Links to additional faith-related resources

Each company received a composite REDI Monitor score with a maximum of 15.

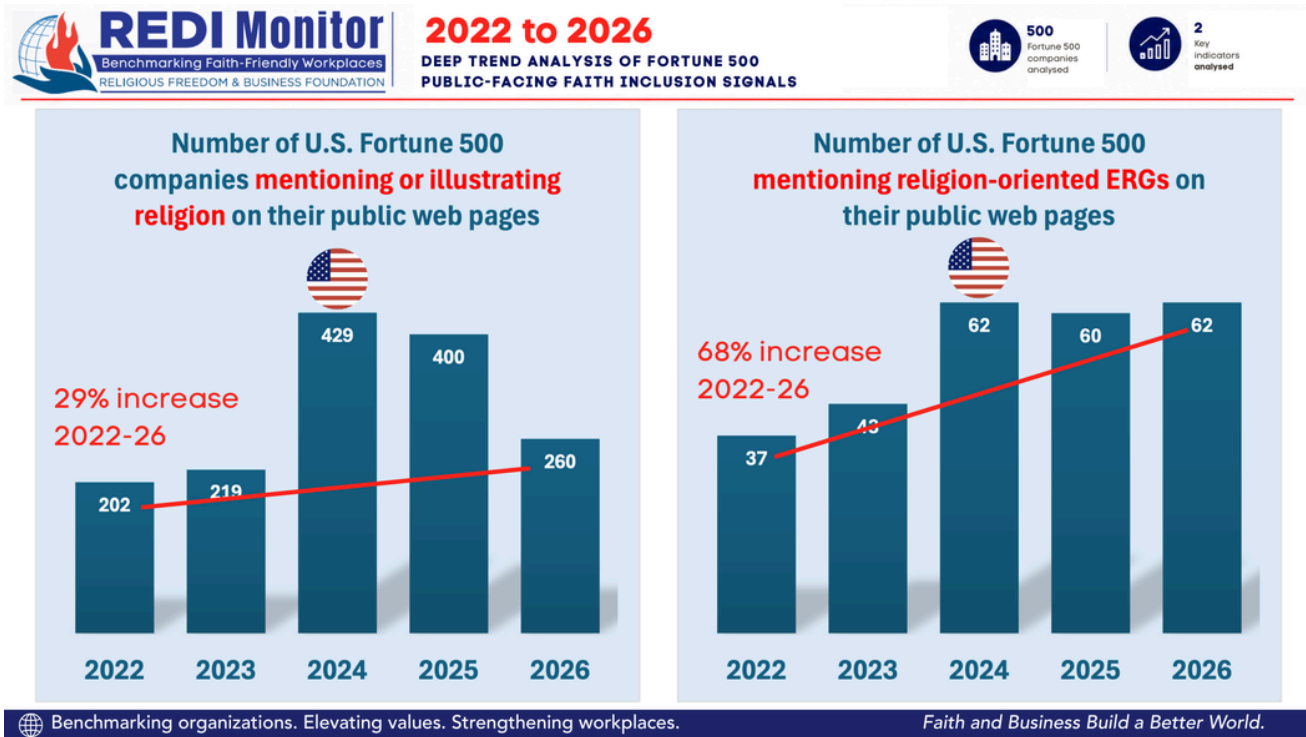
The REDI Monitor evaluates public-facing signals only. As a result, public-facing webpages may not fully reflect internal organizational practices or employee experiences.

## **REDI Monitored Topics:**

**15-point Maximum**

- Website mentions religion
- Faith or Belief ERGs
- Mentions business rationale
- Includes religious images
- Mentions REDI benchmarking
- Links to added info

# Fortune 500 Trends (2022-2026)



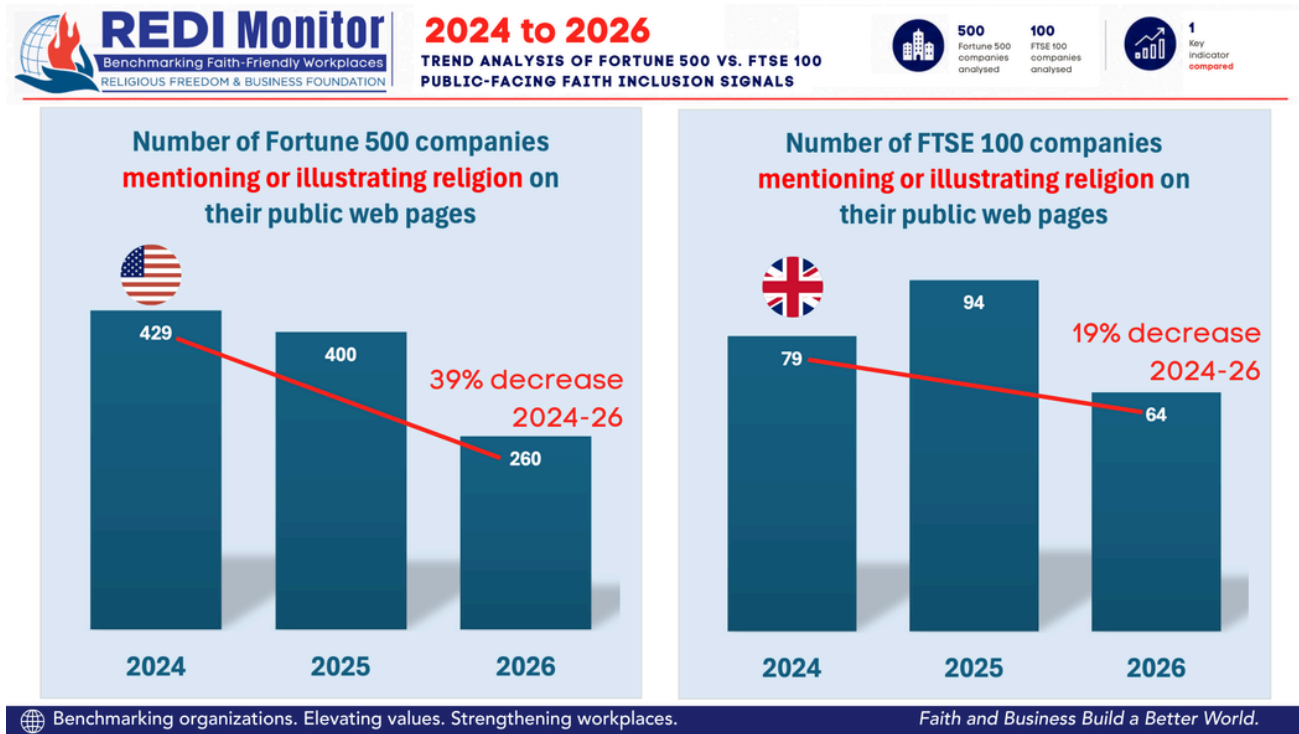
**Figure 2.** Fortune 500 Public-Facing Faith Inclusion Trends: Religion Mentions and Faith-Oriented ERGs (2022-2026) | Religious Freedom & Business Foundation | May 20, 2026

The Fortune 500 data show the clearest reversal in public-facing visibility. Mentions of religion on corporate websites increased significantly from 2022 to 2024 before declining sharply by 2026. Despite this decline, visibility remained above 2022 levels.

In contrast, faith-oriented ERGs followed a steadier trajectory. Mentions increased substantially across the five-year period and remained stable through 2026.

Together, these trends indicate that while external communication softened, institutional structures supporting faith inclusion remained comparatively stable.

# U.S. vs. U.K. Public Visibility of Religion

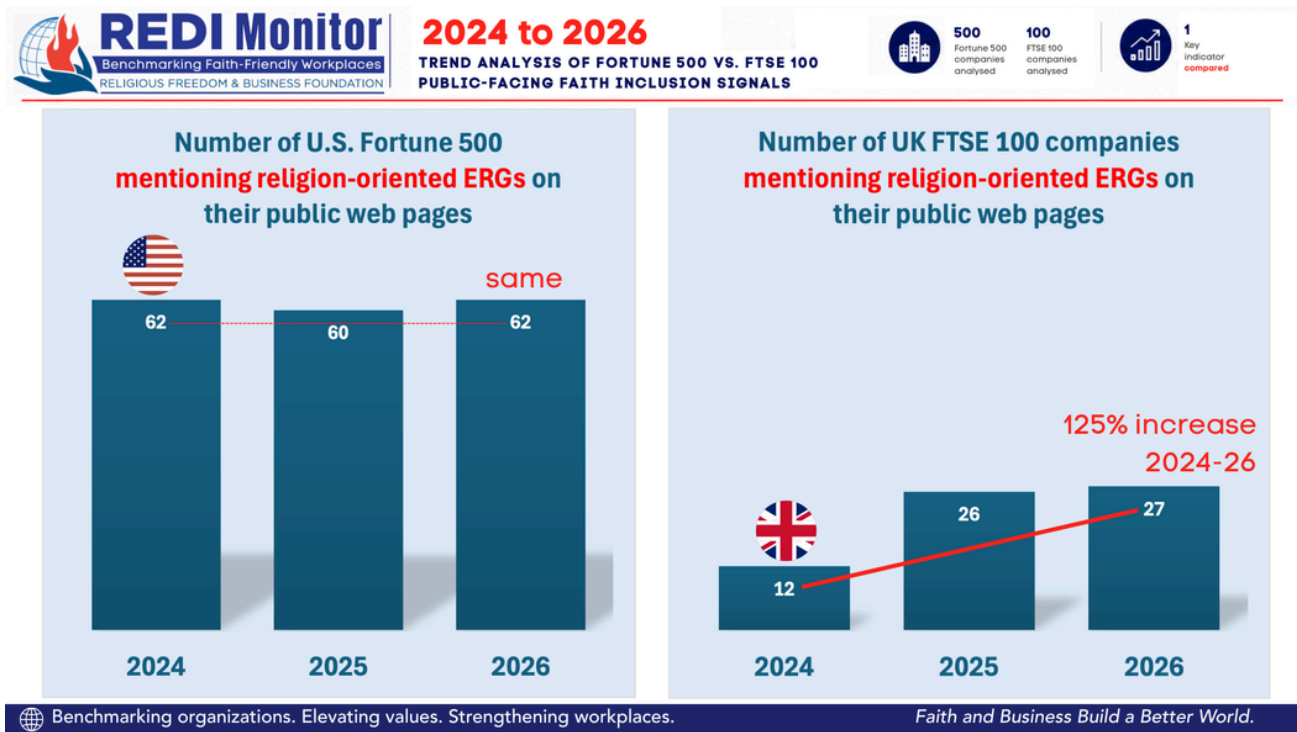


**Figure 3.** Comparison of Public-Facing Mentions or Illustrations of Religion on Fortune 500 and FTSE 100 Company Websites (2024-2026) | Religious Freedom & Business Foundation | May 20, 2026

A cross-market comparison reveals a clear divergence. Public-facing references to religion declined more sharply among Fortune 500 companies than among FTSE 100 firms between 2024 and 2026.

While both groups show contraction, the decline is significantly steeper in the U.S. data. This suggests that companies in the U.S. context are exercising greater caution in external communication on religion relative to their U.K. counterparts.

# Faith-Oriented ERGs: Diverging Momentum

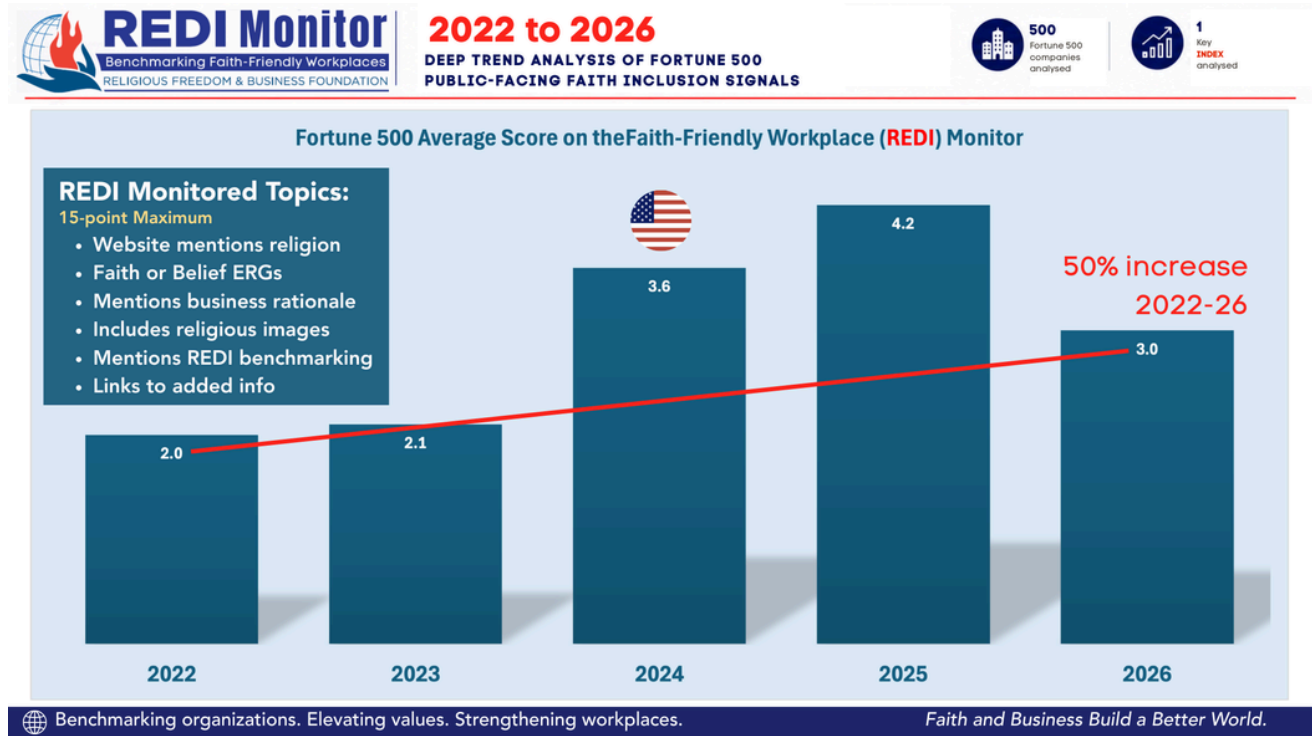


**Figure 4.** Comparison of Publicly Referenced Faith-Oriented ERGs on Fortune 500 and FTSE 100 Company Websites (2024–2026) | Religious Freedom & Business Foundation | May 20, 2026

The divergence is even more pronounced when examining faith-oriented ERGs. Between 2024 and 2026, FTSE 100 companies showed substantial growth in publicly referenced faith-oriented ERGs, while Fortune 500 visibility remained effectively unchanged.

This pattern suggests that institutional commitment to faith inclusion continues to develop in the U.K., even as public communication becomes more restrained in the U.S.

# Fortune 500 REDI Monitor Scores

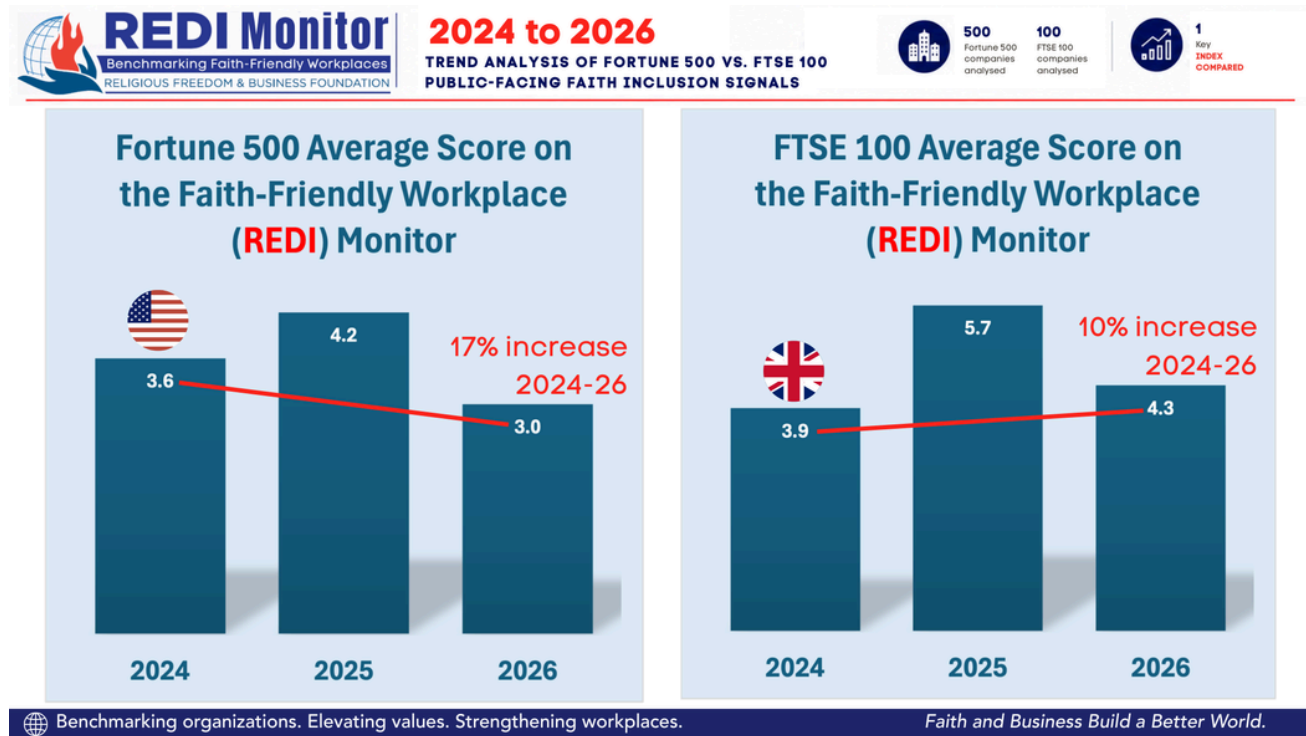


**Figure 5.** Average Fortune 500 REDI Monitor Scores Measuring Public-Facing Faith Inclusion (2022-2026) | Religious Freedom & Business Foundation | May 20, 2026

The REDI Monitor assesses not only whether religion is mentioned, but how comprehensively it is integrated into workplace inclusion narratives.

The average Fortune 500 score increased significantly across the five-year period, rising through 2025 before moderating in 2026. Overall, the long-term trend reflects meaningful progress in embedding faith inclusion into corporate culture, even as public-facing visibility declined in the most recent year.

# Comparative REDI Scores: U.S. vs. U.K.



**Figure 6.** Comparison of Average REDI Monitor Scores for Fortune 500 and FTSE 100 Companies (2024–2026) | Religious Freedom & Business Foundation | May 20, 2026

When comparing parallel years, FTSE 100 companies demonstrate a different trajectory. Average scores increased steadily from 2024 to 2026, while Fortune 500 scores declined over the same period.

In all comparable years, FTSE 100 firms outperformed Fortune 500 companies, suggesting more consistent integration of faith inclusion across multiple dimensions of public-facing engagement.

# Conclusion: REDI Monitor

The 2026 REDI Monitor suggests that faith inclusion in corporate culture is entering a new phase. Public-facing visibility has declined across multiple indicators, particularly among Fortune 500 firms, yet many underlying organizational structures remain intact.

The findings point less to abandonment than to recalibration. Organizations appear to be maintaining key elements of faith inclusion while becoming more selective and cautious in how those commitments are communicated externally.

At the same time, religion and belief remain operational realities in modern workplaces. Issues of accommodation, belonging, identity, and workforce diversity continue shaping organizational life regardless of communication strategy.

The years ahead will reveal whether the declines in public visibility represent a temporary adjustment or a longer-term transformation in how companies approach faith inclusion.

How organizations balance internal commitment with thoughtful and credible external communication may become an increasingly important dimension of workplace culture strategy.

The years ahead will reveal whether the declines in public visibility represent a temporary adjustment or a longer-term transformation in how companies approach faith inclusion. Organizations that align internal commitment with thoughtful, credible external communication will be best positioned to build trust and sustain performance.

# Faith-Friendly Workplace 'REDI' Index



## 2026 U.S. FAITH-FRIENDLY WORKPLACE AWARDS

HONORING ORGANIZATIONS LEADING THE WAY IN FAITH INCLUSION AT WORK

The REDI Index recognizes organizations that are setting the standard for faith-friendly workplaces and driving impact across industries.



AWARDS CEREMONY  
WEDNESDAY,  
MAY 20, 2026



WASHINGTON, DC  
BUSCH SCHOOL OF BUSINESS  
THE CATHOLIC UNIVERSITY  
OF AMERICA



This event will bring together business leaders, workplace professionals, and faith advocates to celebrate progress and share best practices.



### ABOUT THE FAITH-FRIENDLY WORKPLACE 'REDI' INDEX

The REDI Index benchmarks organizations on their commitment to religious inclusion and faith-friendly workplace practices. It provides a framework for companies to evaluate and improve how they support employees of all faiths and beliefs.

CELEBRATING WORKPLACES WHERE FAITH IS WELCOMED. EVERYONE THRIVES.



### FAITH-FRIENDLY WORKPLACES SPAN MULTIPLE SECTORS

Across industries, leading employers are embedding faith-friendly practices that strengthen employee engagement, innovation, and organizational performance.



### A COMPETITIVE ADVANTAGE IN TODAY'S WORKFORCE

Organizations that support faith inclusion see real impact—improved wellbeing, stronger retention, and enhanced reputation. In a values-driven labor market, faith-friendly workplaces stand out.



### ALIGNMENT WITH CORE ORGANIZATIONAL VALUES

This year's honorees lead with respect, integrity, belonging, and purpose. Through ERGs, spiritual care, inclusive policies, and committed leadership, they turn values into action.

On May 20, 2026, the Religious Freedom & Business Foundation (RFBF) recognized the 2026 U.S. Faith-Friendly Workplace 'REDI' Index honorees from leading organizations across sectors that are setting the standard for faith-friendly workplaces.

This year, we recognize organizations by industry sector (see page 12-13), highlighting how faith-friendly workplace leadership is emerging across multiple areas of business and industry.

The progress among sectors highlights a powerful trend: faith inclusion is no longer confined to a narrow set of industries. Instead, leading employers across technology, consulting, finance, manufacturing, energy and utilities are embedding faith-friendly practices into their workplace cultures, strengthening employee engagement, innovation, and organizational performance.

# 2026 U.S. Honorees



The 2026 U.S. Faith-Friendly Workplace 'REDI' Index honorees are:

- **Accenture** -- Top among the Global Fortune 500 & to in Professional Services
- **Equinix** -- Digital Infrastructure
- **Intuit** -- Financial Technology
- **Dell Technologies** -- AI Infrastructure
- **Merck** -- Biopharmaceuticals
- **Consumers Energy** -- Energy & Utilities
- **Salesforce** -- AI CRM Business
- **AZZ** -- U.S. Manufacturing

The 2026 U.S. REDI Index Awards were hosted by the Busch School of Business at The Catholic University of America in Washington, DC, on Wednesday, May 20, 2026.

# 2026 U.K. Honorees



The 2026 U.K. Faith-Friendly Workplace 'REDI' Index honorees are:

- **AWE** — Top in UK Government Sector
- **Baringa** — Top in UK Management Consulting
- **EY UK** — Top among UK Big Four
- **John Lewis Partnership** — Top in UK Retail
- **NATS** — Top in UK Aviation Industry
- **Nationwide** — Top in UK Financial Services
- **OVO Energy** — Top in UK Energy Sector
- **Thames Water** — Top in UK Utilities

The 2026 UK REDI Index Awards were hosted by EY UK at its Canary Wharf office in London on Monday, 10 April 2026.



# REDI Index Question Areas



**REDI Index**  
Benchmarking Faith-Friendly Workplaces  
RELIGIOUS FREEDOM & BUSINESS FOUNDATION

**CELEBRATING WORKPLACES  
WHERE FAITH IS WELCOMED.  
EVERYONE THRIVES.**

---

**2026 U.S.**

## FAITH-FRIENDLY WORKPLACE AWARDS

**HONORING ORGANIZATIONS LEADING THE WAY  
IN FAITH INCLUSION AT WORK**

The REDI Index recognizes organizations that are setting the standard for faith-friendly workplaces and driving impact across industries.



**AWARDS CEREMONY**  
WEDNESDAY,  
**MAY 20, 2026**



**WASHINGTON, DC**  
BUSCH SCHOOL OF BUSINESS  
THE CATHOLIC UNIVERSITY  
OF AMERICA



This event will bring together business leaders, workplace professionals, and faith advocates to celebrate progress and share best practices.

**THE 11+BONUS CRITERIA OF THE REDI INDEX**

 <p>1. Religion is featured on company's main diversity page</p>	 <p>5. Company provides spiritual care and/or chaplaincy services</p>	 <p>9. Employees attend religious diversity conferences</p>
 <p>2. Company sponsors faith and belief employee resource groups (ERGs)</p>	 <p>6. Attentive to how religion impacts stakeholders</p>	 <p>10. Company matches employee donations to religious charities</p>
 <p>3. Company shares best practices with other companies</p>	 <p>7. Accommodates religious needs of employees</p>	 <p>11. Company equitably celebrates or honors holy days of employees</p>
 <p>4. Religion is clearly addressed in diversity training</p>	 <p>8. Clear procedures for reporting discrimination</p>	 <p><b>BONUS</b> * Other ways company promotes religious inclusion</p>



**ABOUT THE FAITH-FRIENDLY WORKPLACE 'REDI' INDEX**  
The REDI Index benchmarks organizations on their commitment to religious inclusion and faith-friendly workplace practices. It provides a framework for companies to evaluate and improve how they support employees of all faiths and beliefs.

The Faith-Friendly Workplace REDI Index is an international benchmarking survey that companies use to track their progress in (and be recognized for) embracing religion and belief (including non-theistic beliefs) as an integral part of their overall commitment to workplace belonging and success.

The 2026 REDI Index survey covers activities occurring during the 12 months ending March 31, 2026, and has the same 11 questions as in 2024, each worth 10 points, for a total of 110 points. Scoring for each point was based on (a) answering in the affirmative with some evidence (5 points), and (b) demonstrating that the efforts are substantial (up to 5 additional points). The "b" part of each question survey offers "tick" lists to provide further detail. Evidence for and/or a brief explanation of answers must be provided by companies.

As in last year's survey, the 2026 edition also has an optional 12th question, which can add up to an additional 10 bonus points. This is because we recognize that companies may be doing other religiously inclusive activities that are not covered in the survey that are worthy of recognition.

# APPENDIX A: Why Faith-Friendly Workplaces Matter

Executive brief on belonging, trust, and human-centered leadership

**Faith-friendly workplaces are about respect for all beliefs —and no belief—grounded in dignity and fairness.**

Faith and belief sit at the core of human identity, shaping values, purpose, and motivation. Employees do not leave these at the workplace door. For many, religious conviction is not only a source of meaning but a driver of commitment, influencing how they work, lead, and make decisions.

A faith-friendly workplace is not about promoting belief. It is about enabling every employee, including those with no religious affiliation, to be treated with dignity and fairness. When that happens, organizations strengthen trust, belonging, and engagement in ways that directly impact performance.

In practical terms, religion and belief show up every day in the workplace, from holidays and scheduling to dietary needs, global teams, and interpersonal dynamics. Organizations that manage these realities well build stronger, more cohesive cultures grounded in respect.

The business case is clear. Many of the core values organizations promote, including integrity, innovation, and customer focus, are rooted in the same belief systems that guide employees' deepest commitments. When employees are cut off from these sources of values, organizations risk weakening their ability to fully live their mission. When those values are aligned, performance strengthens.

At its core, faith inclusion is a leadership issue. In an increasingly pluralistic world, organizations that can foster respect across differences will be better positioned to build trust, sustain performance, and lead with credibility. The opportunity is not simply to be inclusive, but to build workplaces where people bring their full humanity to their work.



BELOING  
RESPECT  
INCLUSIO  
INTEGRIT

Faith & Business Build a Better World.  
Benchmarking organizations. Elevating values. Strengthening workplaces.



# Appendix B: UK REDI Monitor Results

Year	FTSE 100 Company (arranged alphabetically)	mentions religion	Faith ERGs	business rationale	religious images	REDI index or Monitor	Links to added info	REDI Monitor Score
2026	3I GROUP PLC ORD 73 19/22P	1	0	0	0	0	0	1
2026	ADMIRAL GROUP PLC ORD 0.1P	1	0	0	1	0	0	2
2026	AIRTEL AFRICA PLC ORD USD0.50	0	0	0	0	0	0	0
2026	ALLIANCE WITAN PLC ORD 2.5P	0	0	0	0	0	0	0
2026	ANGLO AMERICAN PLC ORD USD0.623855311355311	5	6	1	0	0	0	12
2026	ANTOFAGASTA PLC ORD 5P	0	0	0	0	0	0	0
2026	ASHTREAD GROUP PLC ORD 10P	5	0	1	0	0	0	6
2026	ASSOCIATED BRITISH FOODS PLC ORD 5 15/22P	0	0	0	0	0	0	0
2026	ASTRAZENECA PLC ORD SHS \$0.25	1	6	0	1	0	0	8
2026	AUTOTRADER GROUP PLC ORD 1P	5	1	1	1	0	0	8
2026	AVIVA PLC ORD 32 17/19P	5	0	1	0	0	0	6
2026	BABCOCK INTERNATIONAL GROUP PLC ORD 60P	0	0	0	0	0	0	0
2026	BAE SYSTEMS PLC ORD 2.5P	0	0	0	1	0	0	1
2026	BARCLAYS PLC ORD 25P	0	5	0	0	0	0	5
2026	BARRATT REDROW PLC ORD 10P	5	6	1	0	0	0	12
2026	BEAZLEY PLC ORD 5P	0	0	0	0	0	0	0
2026	BERKELEY GROUP HOLDINGS (THE) PLC ORD 5.6110477936P	0	0	0	0	0	0	0
2026	BP PLC \$0.25	5	0	1	1	0	0	7
2026	BRITISH AMERICAN TOBACCO PLC ORD 25P	0	0	0	0	0	0	0
2026	BRITISH LAND CO PLC ORD 25P	1	0	1	1	0	0	3
2026	BT GROUP PLC ORD 5P	5	6	1	1	0	1	14
2026	BUNZL PLC ORD 32 1/7P	0	0	0	0	0	0	0
2026	BURBERRY GROUP PLC ORD 0.05P	0	0	0	0	0	0	0
2026	CENTRICA PLC ORD 6 14/81P	0	0	0	0	0	0	0
2026	COCA-COLA EUROPACIFIC PARTNERS PLC ORD EUR0.01 (DI)	5	0	1	1	0	0	7
2026	COCA-COLA HBC AG ORD CHF6.70 (CDI)	1	0	1	1	0	0	3
2026	COMPASS GROUP PLC ORD 11 1/20P	0	0	0	0	0	0	0
2026	CONVATEC GROUP PLC ORD 10P	5	0	1	1	0	0	7
2026	CRODA INTERNATIONAL PLC ORD 10 609756P	0	0	0	0	0	0	0
2026	DCC PLC ORD EUR0.25 (CDI)	0	0	0	1	0	0	1
2026	DIAGEO PLC ORD 28 101/108P	0	0	0	0	0	0	0
2026	DIPLOMA PLC ORD 5P	0	0	0	0	0	0	0
2026	EASYJET PLC ORD 27 2/7P	5	0	1	1	0	0	7
2026	ENDEAVOUR MINING PLC ORD USD0.01	1	0	1	1	0	0	3
2026	ENTAIN PLC ORD EUR0.01	0	0	0	0	0	0	0
2026	EXPERIAN PLC ORD USD0.10	5	7	1	1	1	0	15
2026	F&C INVESTMENT TRUST PLC ORD 25P	0	0	0	0	0	0	0
2026	FRESNILLO PLC ORD USD0.50	5	0	1	0	0	0	6
2026	GAMES WORKSHOP GROUP PLC ORD 5P	0	0	0	0	0	0	0
2026	GLENCORE PLC ORD USD0.01	5	0	1	0	0	0	6
2026	GSK PLC ORD 31 1/4P	5	6	1	0	0	0	12
2026	HALEON PLC ORD GBP0.01	0	0	0	0	0	0	0
2026	HALMA PLC ORD 10P	0	0	0	0	0	0	0
2026	HIKMA PHARMACEUTICALS PLC ORD SHS 10P	0	0	0	1	0	0	1
2026	HISCOX LD ORD 6.5P (DI)	0	0	0	0	0	0	0
2026	HOWDEN JOINERY GROUP PLC ORD 10P	5	1	1	0	0	0	7
2026	HSBC Holdings PLC - HSBA	5	6	1	1	0	0	13
2026	ICG PLC ORD 26 1/4P	5	0	1	0	0	0	6
2026	IMI PLC ORD 28 4/7P	1	0	0	0	0	0	1
2026	IMPERIAL BRANDS PLC ORD 10P	0	0	0	0	0	0	0
2026	INFORMA PLC ORD 0.1P	1	0	1	1	0	0	3
2026	INTERCONTINENTAL HOTELS GROUP PLC ORD 20 340/399P	0	0	0	0	0	0	0
2026	International CONSOLIDATED AIRLINES GROUP SA ORD EUR0.1	1	0	1	1	0	0	3
2026	INTERTEK GROUP PLC ORD 1P	1	6	1	1	0	0	9
2026	JD SPORTS FASHION PLC ORD 0.05P	0	0	0	1	0	0	1
2026	KINGFISHER PLC ORD 15 5/7P	0	0	0	0	0	0	0
2026	LAND SECURITIES GROUP PLC ORD 10 2/3P	0	0	0	1	0	0	1
2026	LEGAL & GENERAL GROUP PLC ORD 2 1/2P	0	0	0	0	0	0	0
2026	LLOYDS BANKING GROUP PLC ORD 10P	1	6	1	1	0	0	9
2026	LONDON STOCK EXCHANGE GROUP PLC ORD SHS 6 79/86P	5	6	1	0	0	0	12
2026	LONDONMETRIC PROPERTY PLC ORD 10P	0	0	0	0	0	0	0
2026	M&G PLC ORD £0.05	5	6	1	0	0	1	13
2026	MARKS & SPENCER GROUP PLC - MKS	5	6	1	1	0	0	13
2026	MELROSE INDUSTRIES PLC ORD GBP0.001	5	0	1	0	0	0	6
2026	METLEN ENERGY & METALS PLC ORD EUR1.00	0	0	0	0	0	0	0
2026	MONDI PLC ORD EUR 0.22	1	0	1	1	0	0	3
2026	NATIONAL GRID PLC ORD 12 204/473P	0	0	0	1	0	0	1
2026	NATWEST GROUP PLC ORD 107 69P	1	6	1	1	0	0	9
2026	NEXT PLC ORD 10P	5	6	0	1	0	0	12
2026	PEARSON PLC ORD 25P	0	0	0	1	0	0	1

Appendix B: UK REDI Monitor Results

2026	PERSHING SQUARE HOLDINGS LTD ORD NPV	1	0	1	0	0	0	2
2026	PERSIMMON PLC ORD 10P	1	0	1	0	0	0	2
2026	PHOENIX GROUP HOLDINGS PLC ORD 10P	5	5	1	1	0	1	13
2026	POLAR CAPITAL TECHNOLOGY TRUST PLC ORD 2.5P	0	0	0	0	0	0	0
2026	PRUDENTIAL PLC ORD 5P	5	0	1	1	0	0	7
2026	RECKITT BENCKISER GROUP PLC ORD 10 5/12P	0	0	0	0	0	0	0
2026	RELX PLC ORD 14 5/1/116P	5	0	1	0	0	0	6
2026	RENTOKIL INITIAL PLC ORD 1P	0	0	0	1	0	0	1
2026	RIGHTMOVE PLC ORD 0.1P	0	0	0	0	0	0	0
2026	RIO TINTO PLC ORD 10P	5	0	1	0	0	0	6
2026	ROLLS-ROYCE HOLDINGS PLC ORD SHS 20P	0	0	0	0	0	0	0
2026	SAINSBURY(J) PLC ORD 28 4/7P	0	0	0	1	0	0	1
2026	SCHRODERS PLC ORD 20P	5	6	1	1	0	0	13
2026	SCOTTISH MORTGAGE INV TST PLC ORD 5P	0	0	0	0	0	0	0
2026	SEGRO PLC ORD 10P	0	0	0	0	0	0	0
2026	SEVERN TRENT PLC ORD 97 17/19P	6	0	0	1	0	0	7
2026	SHELL PLC ORDE EUR0.07	1	0	0	0	0	0	1
2026	SMITH & NEPHEW PLC ORD USD0.20	5	6	1	1	0	0	13
2026	SMITHS GROUP PLC ORD 37.5P	0	0	0	0	0	0	0
2026	SPIRAX GROUP PLC ORD 26 12/13P	5	5	1	0	0	1	12
2026	SSE PLC ORD 50P	1	5	1	1	0	1	9
2026	ST.JAMES'S PLACE PLC ORD 15P	5	6	1	0	0	0	12
2026	STANDARD CHARTERED PLC ORD USD0.50	5	0	1	1	0	0	7
2026	TESCO PLC ORD 6 1/3P	5	6	1	0	0	0	12
2026	THE SAGE GROUP PLC ORD 1 4/77P	0	0	0	0	0	0	0
2026	UNILEVER PLC ORD 3.5P	0	5	0	0	0	0	5
2026	UNITED UTILITIES GROUP PLC ORD 5P	5	6	1	1	1	1	15
2026	VODAFONE GROUP PLC ORD USD0.20 20/21	0	0	0	1	0	0	1
2026	WEIR GROUP PLC ORD 12.5P	0	0	0	0	0	0	0
2026	WHITBREAD PLC ORD 76 122/153P	5	6	1	0	0	0	12

# Appendix C: U.S. REDI Monitor Results

	F500 Company (arranged alphabetically)	Website mentions religion	Faith ERGs	Mentions business rationale	Includes religious images	Mentions REDI Index or Monitor	Links to added info	REDI Monitor Score
2026	3M	5	0	0	0	0	0	5
2026	Abbott Laboratories	1	0	0	0	0	0	1
2026	AbbVie	1	1	1	1	0	0	4
2026	ABM Industries	0	0	0	0	0	0	0
2026	Ace Hardware	1	0	0	1	0	0	2
2026	Adobe	5	0	1	0	0	0	6
2026	Advance Auto Parts	5	0	1	1	0	0	7
2026	Advanced Micro Devices (AMD)	0	0	0	0	0	0	0
2026	AECOM	0	0	0	1	0	0	1
2026	AES	0	0	0	0	0	0	0
2026	Aflac	0	0	0	0	0	0	0
2026	AGCO	0	0	0	0	0	0	0
2026	AIG	1	6	1	1	0	0	9
2026	Air Products & Chemicals	0	0	0	0	0	0	0
2026	Airbnb	5	6	1	0	0	0	12
2026	Alaska Air Group	5	0	1	0	0	0	6
2026	Albertsons	1	0	0	0	0	0	1
2026	Alcoa	1	0	0	0	0	0	1
2026	Allstate	5	0	1	0	0	0	6
2026	Ally Financial	1	0	0	0	0	0	1
2026	Alphabet	1	0	0	1	0	0	2
2026	Altria Group	1	5	0	0	1	0	7
2026	Amazon	0	0	0	0	0	0	0
2026	American Airlines Group	5	6	1	1	1	0	14
2026	American Electric Power	1	0	0	0	0	0	1
2026	American Express	5	6	0	0	0	0	11
2026	American Family Insurance Gro	0	0	0	0	0	0	0
2026	American Financial Group	1	0	1	0	0	0	2
2026	American Tower	0	0	0	0	0	0	0
2026	Ameriprise Financial	5	6	1	1	0	0	13
2026	Amgen	1	0	1	0	0	0	2
2026	Amphenol	0	0	0	0	0	0	0
2026	Analog Devices	0	0	0	0	0	0	0
2026	Andersons	0	0	0	0	0	0	0
2026	APA	0	0	0	0	0	0	0
2026	Apollo Global Management	0	0	0	0	0	0	0
2026	Apple	5	5	1	0	0	0	11
2026	Applied Materials	5	0	0	0	0	0	5
2026	Aramark	5	6	1	0	0	0	12
2026	Archer Daniels Midland	0	0	0	0	0	0	0
2026	ARKO	0	0	0	0	0	0	0
2026	Arrow Electronics	0	0	0	0	0	0	0
2026	Arthur J. Gallagher	5	0	1	0	0	0	6
2026	Asbury Automotive Group	5	0	1	0	0	0	6
2026	Assurant	1	0	0	0	0	0	1
2026	AT&T	5	5	1	1	0	0	12
2026	Auto-Owners Insurance	5	0	0	0	0	0	5
2026	Autoliv	0	0	0	0	0	0	0
2026	Automatic Data Processing	5	0	1	0	0	0	6
2026	AutoNation	0	0	0	0	0	0	0
2026	AutoZone	0	0	0	0	0	0	0
2026	Avery Dennison	0	0	0	0	0	0	0
2026	Avis Budget Group	5	0	1	0	0	0	6
2026	Avnet	1	0	0	0	0	0	1
2026	Baker Hughes	5	0	1	0	0	0	6
2026	Ball	1	0	0	0	0	0	1
2026	Bank of America	5	6	1	0	0	0	12
2026	Bank of New York (BNY)	0	0	0	0	0	0	0

Appendix B: U.S. REDI Monitor Results

2026	Baxter International	5	0	1	0	0	0	6
2026	Becton Dickinson	5	0	1	0	0	0	6
2026	Berkshire Hathaway	0	0	0	0	0	0	0
2026	Berry Global Group	0	0	0	0	0	0	0
2026	Best Buy	0	5	0	0	0	0	5
2026	Biogen	5	0	1	0	0	0	6
2026	BJ's Wholesale Club	0	0	0	0	0	0	0
2026	BlackRock	5	5	1	0	0	0	11
2026	Blackstone	5	0	1	0	0	0	6
2026	Block	0	5	0	0	0	0	5
2026	Boeing	5	0	0	0	0	0	5
2026	Booking Holdings	0	0	0	0	0	0	0
2026	Booz Allen Hamilton Holding	0	0	0	0	0	0	0
2026	BorgWarner	5	0	0	0	0	0	5
2026	Boston Scientific	5	0	0	0	0	0	5
2026	BrightSpring Health Services	1	0	0	0	0	0	1
2026	Bristol-Myers Squibb	5	0	1	0	0	0	6
2026	Broadcom	0	0	0	0	0	0	0
2026	Builders FirstSource	0	0	0	0	0	0	0
2026	Burlington Stores	0	0	0	0	0	0	0
2026	C.H. Robinson Worldwide	0	0	0	0	0	0	0
2026	CACI International	5	0	0	0	0	0	5
2026	Caesars Entertainment	5	0	0	0	0	0	5
2026	Campbell's	0	0	0	0	0	0	0
2026	Capital One Financial	5	0	1	1	0	0	7
2026	Cardinal Health	0	0	0	0	0	0	0
2026	CarMax	0	0	0	0	0	0	0
2026	Carrier Global	0	0	0	0	0	0	0
2026	Carvana	0	0	0	0	0	0	0
2026	Casey's General Stores	0	5	0	0	0	0	5
2026	Caterpillar	0	0	0	0	0	0	0
2026	CBRE Group	5	5	1	1	0	0	12
2026	CDW	0	0	0	0	0	0	0
2026	Celanese	0	0	0	0	0	0	0
2026	Cencora	5	0	1	0	0	0	6
2026	Centene	0	0	0	0	0	0	0
2026	CenterPoint Energy	0	0	0	0	0	0	0
2026	Charles Schwab	5	0	1	0	0	0	6
2026	Charter Communications	5	0	0	0	0	0	5
2026	Cheniere Energy	5	0	1	0	0	0	6
2026	Chevron	0	0	0	0	0	0	0
2026	Chewy	0	0	0	1	0	0	1
2026	Chipotle Mexican Grill	0	0	0	0	0	0	0
2026	CHS	0	0	0	0	0	0	0
2026	Cigna	5	6	1	0	0	0	12
2026	Cincinnati Financial	0	0	0	0	0	0	0
2026	Cintas	5	0	0	0	0	0	5
2026	Cisco Systems	5	5	0	0	0	0	10
2026	Citigroup	5	6	1	0	0	0	12
2026	Citizens Financial Group	5	0	1	0	0	0	6
2026	Cleveland-Cliffs	5	0	0	0	0	0	5
2026	CMS Energy	5	6	1	1	1	1	15
2026	Coca-Cola	0	0	0	0	0	0	0
2026	Cognizant Technology Solutions	0	0	0	1	0	0	1
2026	Colgate-Palmolive	0	0	0	0	0	0	0
2026	Comcast	0	0	0	0	0	0	0
2026	Commercial Metals	1	0	0	0	0	0	1
2026	Community Health Systems	5	0	1	0	0	0	6
2026	Conagra Brands	5	0	1	0	0	0	6
2026	Concentrix	0	0	0	1	0	0	1
2026	ConocoPhillips	0	0	0	0	0	0	0

Appendix B: U.S. REDI Monitor Results

2026	Consolidated Edison	5	6	1	1	0	0	13
2026	Constellation Brands	0	0	0	0	0	0	0
2026	Constellation Energy	5	0	1	0	0	0	6
2026	Core & Main	0	0	0	0	0	0	0
2026	Corebridge Financial	0	0	0	0	0	0	0
2026	Corning	1	0	0	0	0	1	2
2026	Corteva	0	0	0	0	0	0	0
2026	Costco Wholesale	0	0	0	0	0	0	0
2026	Coupang	0	0	0	0	0	0	0
2026	Crown Holdings	0	0	0	1	0	0	1
2026	CSX	0	0	0	0	0	0	0
2026	Cummins	1	0	1	0	0	0	2
2026	CVS Health	5	6	1	0	0	0	12
2026	D.R. Horton	0	0	0	0	0	0	0
2026	Dana	5	0	1	0	0	0	6
2026	Danaher	0	0	0	0	0	0	0
2026	Darden Restaurants	0	0	0	0	0	0	0
2026	DaVita	0	0	0	0	0	0	0
2026	Deere	0	0	0	0	0	0	0
2026	Delek US Holdings	0	0	0	0	0	0	0
2026	Dell Technologies	5	6	1	0	0	0	12
2026	Delta Air Lines	1	0	0	1	0	0	2
2026	Devon Energy	5	0	0	0	0	0	5
2026	Diamondback Energy	0	0	0	0	0	0	0
2026	DICK'S Sporting Goods	5	0	1	0	0	0	6
2026	Discover	5	0	1	0	0	0	6
2026	Dollar General	0	0	0	0	0	0	0
2026	Dollar Tree	0	0	0	0	0	0	0
2026	Dominion Energy	1	0	0	0	0	0	1
2026	DoorDash	5	0	0	0	0	0	5
2026	Dover	5	0	1	0	0	0	6
2026	Dow	0	0	0	1	0	0	1
2026	DTE Energy	5	0	1	0	0	0	6
2026	Duke Energy	0	0	0	0	0	0	0
2026	DuPont	0	0	0	0	0	0	0
2026	DXC Technology	1	0	0	1	0	0	2
2026	Eastman Chemical	0	0	0	0	0	0	0
2026	Ebay	5	1	1	1	0	0	8
2026	EchoStar	1	0	0	1	0	0	2
2026	Ecolab	0	0	0	1	0	0	1
2026	Edison International	0	0	0	0	0	0	0
2026	Electronic Arts	1	0	0	0	0	0	1
2026	Elevance Health	0	0	0	0	0	0	0
2026	Eli Lilly	5	0	1	0	0	0	6
2026	EMCOR Group	1	0	0	1	0	0	2
2026	Emerson Electric	0	0	0	1	0	0	1
2026	Endeavor Group Holdings	0	0	0	0	0	0	0
2026	Energy Transfer	0	0	0	1	0	0	1
2026	Entergy	0	0	0	0	0	0	0
2026	Enterprise Products Partners	5	0	0	0	0	0	5
2026	EOG Resources	0	0	0	0	0	0	0
2026	Equinix	5	6	1	1	1	1	15
2026	Equitable Holdings	5	0	1	0	0	0	6
2026	Erie Insurance Group	0	0	0	0	0	0	0
2026	Estée Lauder	5	0	1	0	0	0	6
2026	Eversource Energy	1	0	0	0	0	0	1
2026	Exelon	5	0	1	0	0	0	6
2026	Expedia Group	5	0	0	1	0	0	6
2026	Expeditors Intl. of Washington	1	0	1	0	0	0	2
2026	Exxon Mobil	0	0	0	0	0	0	0
2026	Fannie Mae	5	0	0	0	0	0	5

Appendix B: U.S. REDI Monitor Results

2026	Farmers Insurance Exchange	1	0	0	1	0	0	2
2026	Fastenal	0	0	0	0	0	0	0
2026	FedEx	0	5	0	0	0	0	5
2026	Ferguson Enterprises	0	0	0	0	0	0	0
2026	Fidelity National Financial	5	0	0	0	0	0	5
2026	Fidelity National Information Ser	5	0	1	0	0	0	6
2026	Fifth Third Bancorp	0	0	0	0	0	0	0
2026	First Citizens BancShares	0	0	0	0	0	0	0
2026	FirstEnergy	1	6	0	0	0	0	7
2026	Fiserv	1	0	0	0	0	0	1
2026	Fluor	0	0	0	1	0	0	1
2026	FM	0	0	0	0	0	0	0
2026	Foot Locker	5	0	0	0	0	0	5
2026	Ford Motor	5	6	1	0	0	0	12
2026	Fox	0	0	0	0	0	0	0
2026	Franklin Resources	5	0	1	0	0	0	6
2026	Freddie Mac	0	0	0	0	0	0	0
2026	Freeport-McMoRan	5	0	1	0	0	0	6
2026	Gap	0	0	0	0	0	0	0
2026	GE Aerospace	5	6	1	0	0	0	12
2026	GE HealthCare Technologies	5	5	1	0	0	0	11
2026	GE Vernova	5	0	1	1	0	0	7
2026	General Dynamics	0	0	0	0	0	0	0
2026	General Mills	0	0	0	0	0	0	0
2026	General Motors	5	6	1	0	0	0	12
2026	Genuine Parts	5	0	1	0	0	0	6
2026	Gilead Sciences	0	0	0	1	0	0	1
2026	Global Partners	0	0	0	0	0	0	0
2026	Global Payments	0	0	0	1	0	0	1
2026	Gold.com	0	0	0	0	0	0	0
2026	Goldman Sachs Group	0	0	0	0	0	0	0
2026	Goodyear Tire & Rubber	0	0	0	0	0	0	0
2026	Graphic Packaging Holding	1	0	1	1	0	0	3
2026	Graybar Electric	5	0	1	0	0	0	6
2026	Group 1 Automotive	0	0	0	0	0	0	0
2026	Guardian Life Ins. Co. of Americ	0	0	0	0	0	0	0
2026	GuideWell Mutual Holding	0	5	0	0	0	0	5
2026	GXO Logistics	1	0	0	0	0	0	1
2026	Halliburton	0	0	0	0	0	0	0
2026	Hartford Insurance Group	1	0	0	0	0	0	1
2026	HCA Healthcare	0	0	0	0	0	0	0
2026	Henry Schein	0	0	0	0	0	0	0
2026	Hershey	1	0	0	0	0	0	1
2026	Hertz Global Holdings	0	0	0	0	0	0	0
2026	Hess (acquired by Chevron)	0	0	0	0	0	0	0
2026	Hewlett Packard Enterprise	1	0	0	0	0	0	1
2026	HF Sinclair	0	0	0	0	0	0	0
2026	Hilton Worldwide Holdings	0	0	0	0	0	0	0
2026	Home Depot	5	0	1	0	0	0	6
2026	Honeywell International	0	0	0	0	0	0	0
2026	Hormel Foods	0	0	0	0	0	0	0
2026	Howmet Aerospace	1	0	1	0	0	0	2
2026	HP	5	0	1	0	0	0	6
2026	Humana	5	0	1	0	0	0	6
2026	Huntington Bancshares	0	0	0	0	0	0	0
2026	Huntington Ingalls Industries	5	0	1	0	0	0	6
2026	IBM	0	0	0	0	0	0	0
2026	Icahn Enterprises	0	0	0	0	0	0	0
2026	Illinois Tool Works	0	0	0	0	0	0	0
2026	Ingram Micro Holding	5	0	0	0	0	0	5
2026	Ingredion	0	0	0	0	0	0	0

Appendix B: U.S. REDI Monitor Results

2026	Insight Enterprises	5	0	1	1	0	0	7
2026	Intel	5	6	1	1	0	0	13
2026	Interactive Brokers Group	0	0	0	0	0	0	0
2026	Intercontinental Exchange	0	0	0	0	0	0	0
2026	International Flavors & Fragranc	0	0	0	0	0	0	0
2026	International Paper	0	0	0	0	0	0	0
2026	Interpublic Group (acquired by C	0	0	0	0	0	0	0
2026	Intuit	5	6	1	1	1	1	15
2026	Intuitive Surgical	0	0	0	0	0	0	0
2026	IQVIA Holdings	5	6	1	1	0	1	14
2026	J.B. Hunt Transport Services	5	0	1	0	0	0	6
2026	J.M. Smucker	0	0	0	0	0	0	0
2026	Jabil	5	0	1	1	0	0	7
2026	Jacobs Solutions	0	0	0	0	0	0	0
2026	Jefferies Financial Group	0	0	0	0	0	0	0
2026	JetBlue Airways	0	0	0	0	0	0	0
2026	Johnson & Johnson	0	0	0	0	0	0	0
2026	Jones Financial (Edward Jones)	5	6	1	0	0	1	13
2026	Jones Lang LaSalle (JLL)	0	0	0	0	0	0	0
2026	JPMorgan Chase	0	0	0	1	0	0	1
2026	KBR	0	0	0	0	0	0	0
2026	Kellanova	0	0	0	0	0	0	0
2026	Kenvue	0	0	0	0	0	0	0
2026	Keurig Dr Pepper	0	0	0	0	0	0	0
2026	KeyCorp	5	6	1	1	0	1	14
2026	Kimberly-Clark	0	0	0	1	0	0	1
2026	Kinder Morgan	5	0	1	0	0	0	6
2026	KKR	5	6	1	1	0	0	13
2026	KLA	0	0	0	0	0	0	0
2026	Kohl's	0	0	0	0	0	0	0
2026	Kraft Heinz	0	0	0	0	0	0	0
2026	Kroger	5	0	1	1	0	0	7
2026	Kyndryl Holdings	5	0	1	1	0	0	7
2026	L3Harris Technologies	0	0	0	0	0	0	0
2026	Labcorp Holdings	0	0	0	0	0	0	0
2026	Lam Research	0	0	0	0	0	0	0
2026	Land O'Lakes	0	0	0	0	0	0	0
2026	Las Vegas Sands	5	0	1	0	0	0	6
2026	Lear	0	0	0	0	0	0	0
2026	Leidos Holdings	1	0	0	0	0	0	1
2026	Lennar	0	0	0	0	0	0	0
2026	Liberty Mutual Insurance Group	0	0	0	0	0	0	0
2026	Lincoln National	5	0	1	1	0	0	7
2026	Lithia Motors	0	0	0	0	0	0	0
2026	Live Nation Entertainment	0	0	0	0	0	0	0
2026	LKQ	0	0	0	0	0	0	0
2026	Lockheed Martin	0	0	0	0	0	0	0
2026	Loews	5	0	1	0	0	0	6
2026	Lowe's	5	0	1	0	0	0	6
2026	LPL Financial Holdings	0	0	0	0	0	0	0
2026	Lululemon athletica	0	0	0	0	0	0	0
2026	Lumen Technologies	5	0	1	0	0	0	6
2026	M&T Bank	5	0	1	0	0	0	6
2026	Macy's	0	0	0	0	0	0	0
2026	ManpowerGroup	0	0	0	0	0	0	0
2026	Marathon Petroleum	1	0	0	0	0	0	1
2026	Markel Group	0	0	0	0	0	0	0
2026	Marriott International	0	0	0	0	0	0	0
2026	Marsh McLennan Agency, Midw	5	0	0	1	0	0	6
2026	Masco	1	0	0	0	0	0	1
2026	Massachusetts Mutual Life	0	0	0	0	0	0	0

Appendix B: U.S. REDI Monitor Results

2026	MasTec	0	0	0	0	0	0	0
2026	Mastercard	0	0	0	0	0	0	0
2026	McDonald's	1	0	0	0	0	0	1
2026	McKesson	0	0	0	0	0	0	0
2026	Merck (U.S.)	1	6	1	1	0	0	9
2026	Meta Platforms	5	0	1	1	0	0	7
2026	MetLife	0	0	0	0	0	0	0
2026	MGM Resorts International	0	0	0	0	0	0	0
2026	Microchip Technology	0	0	0	0	0	0	0
2026	Micron Technology	1	0	1	1	0	0	3
2026	Microsoft	0	0	0	0	0	0	0
2026	Mohawk Industries	0	0	0	0	0	0	0
2026	Molina Healthcare	5	0	0	0	0	0	5
2026	Molson Coors Beverage	0	0	0	0	0	0	0
2026	Mondelez International	0	0	0	0	0	0	0
2026	Monster Beverage	5	0	1	0	0	0	6
2026	Morgan Stanley	1	6	1	0	0	0	8
2026	Mosaic	0	0	0	0	0	0	0
2026	Motorola Solutions	0	0	0	0	0	0	0
2026	Murphy USA	5	0	1	0	0	0	6
2026	Mutual of Omaha	0	0	0	0	0	0	0
2026	Nationwide	0	0	0	0	0	0	0
2026	Netflix	5	6	1	0	0	0	12
2026	New York Life Insurance	0	0	0	0	0	0	0
2026	Newell Brands	1	0	0	0	0	0	1
2026	Newmont	0	0	0	0	0	0	0
2026	News Corp.	0	0	0	0	0	0	0
2026	NextEra Energy	5	6	1	1	0	0	13
2026	Nike	0	0	0	0	0	0	0
2026	Nordstrom	0	0	0	0	0	0	0
2026	Norfolk Southern	5	0	1	0	0	0	6
2026	Northern Trust	0	0	0	1	0	0	1
2026	Northrop Grumman	0	0	0	0	0	0	0
2026	Northwestern Mutual	1	0	1	0	0	0	2
2026	NOV	0	0	0	0	0	0	0
2026	NRG Energy	0	0	0	0	0	0	0
2026	Nucor	0	0	0	0	0	0	0
2026	Nvidia	0	0	0	0	0	0	0
2026	NVR	0	0	0	0	0	0	0
2026	O'Reilly Automotive	5	0	1	0	0	0	6
2026	Occidental Petroleum	5	0	1	1	0	0	7
2026	Old Republic International	5	0	1	1	0	0	7
2026	Omnicom Group	0	0	0	0	0	0	0
2026	Oneok	5	0	1	0	0	0	6
2026	Optimum Communications	0	0	0	0	0	0	0
2026	Oracle	5	0	1	1	0	0	7
2026	Oscar Health	0	0	0	0	0	0	0
2026	Oshkosh	1	0	0	0	0	0	1
2026	Otis Worldwide	0	0	1	1	0	0	2
2026	Ovintiv	5	1	0	0	0	0	6
2026	Owens & Minor	5	0	1	0	0	0	6
2026	Owens Corning	1	6	0	0	0	0	7
2026	Paccar	0	0	0	0	0	0	0
2026	Pacific Life	0	0	0	0	0	0	0
2026	Packaging Corp. of America	5	0	0	0	0	0	5
2026	Palo Alto Networks	0	0	0	0	0	0	0
2026	Par Pacific Holdings	0	0	0	0	0	0	0
2026	Paramount Global	0	0	0	0	0	0	0
2026	Parker-Hannifin	5	0	1	0	0	0	6
2026	PayPal Holdings	5	6	1	0	0	0	12
2026	PBF Energy	0	0	0	0	0	0	0

Appendix B: U.S. REDI Monitor Results

2026	Penske Automotive Group	0	0	0	0	0	0	0
2026	PepsiCo	5	0	0	0	0	0	5
2026	Performance Food Group	5	0	1	0	0	0	6
2026	Peter Kiewit Sons'	0	0	0	0	0	0	0
2026	Pfizer	1	0	0	1	0	0	2
2026	PG&E	0	0	0	0	0	0	0
2026	Philip Morris International	0	0	0	1	0	0	1
2026	Phillips 66	5	0	1	1	0	0	7
2026	Plains GP Holdings	0	0	0	0	0	0	0
2026	PNC Financial Services Group	5	6	1	0	0	0	12
2026	Post Holdings	1	0	0	0	0	0	1
2026	PPG Industries	0	0	0	1	0	0	1
2026	PPL	0	0	0	0	0	0	0
2026	Principal Financial Group	5	0	1	0	0	0	6
2026	Procter & Gamble	0	0	0	0	0	0	0
2026	Progressive	5	0	1	0	0	0	6
2026	Prologis	0	0	0	0	0	0	0
2026	Prudential Financial (U.S.)	5	0	1	0	0	0	6
2026	Public Service Enterprise Group	1	0	0	0	0	0	1
2026	Publix Super Markets	0	0	0	0	0	0	0
2026	PulteGroup	0	0	0	0	0	0	0
2026	PVH	1	0	0	0	0	0	1
2026	Qualcomm	0	0	0	0	0	0	0
2026	Quanta Services	5	0	1	0	0	0	6
2026	Quest Diagnostics	1	0	1	0	0	0	2
2026	QVC Group	5	6	1	0	0	0	12
2026	QXO Building Products	0	0	0	0	0	0	0
2026	Raymond James Financial	5	0	0	1	0	0	6
2026	Regeneron Pharmaceuticals	0	0	0	0	0	0	0
2026	Regions Financial	0	0	0	0	0	0	0
2026	Reinsurance Group of America	5	6	1	1	0	0	13
2026	Reliance	1	0	1	1	0	0	3
2026	Republic Services	1	0	0	0	0	0	1
2026	Rockwell Automation	1	6	1	0	0	0	8
2026	Ross Stores	5	0	1	0	0	0	6
2026	RTX	5	0	1	0	0	0	6
2026	Rush Enterprises	0	0	0	0	0	0	0
2026	Ryder System	0	0	0	0	0	0	0
2026	S&P Global	0	0	0	0	0	0	0
2026	Salesforce	5	1	1	1	0	1	9
2026	Sanmina	0	0	0	0	0	0	0
2026	Science Applications Internation	0	0	0	0	0	0	0
2026	Seaboard	0	0	0	0	0	0	0
2026	Securian Financial Group	5	5	1	0	0	1	12
2026	Sempra	0	0	0	1	0	0	1
2026	ServiceNow	5	6	1	0	0	0	12
2026	Sherwin-Williams	0	0	0	0	0	0	0
2026	Sirius XM Holdings	0	0	0	0	0	0	0
2026	Skechers U.S.A.	0	0	0	0	0	0	0
2026	Solventum	1	0	1	0	0	0	2
2026	Sonic Automotive	1	0	0	0	0	0	1
2026	Southern Company	5	0	1	1	0	0	7
2026	Southwest Airlines	0	0	0	0	0	0	0
2026	SpartanNash	5	0	1	0	0	0	6
2026	Sprouts Farmers Market	0	0	0	0	0	0	0
2026	Stanley Black & Decker	0	0	0	0	0	0	0
2026	Starbucks	5	0	1	0	0	0	6
2026	State Farm Insurance	0	0	0	0	0	0	0
2026	State Street	1	6	1	1	0	0	9
2026	Steel Dynamics	1	0	0	0	0	0	1
2026	StoneX Group	0	0	0	1	0	0	1

Appendix B: U.S. REDI Monitor Results

2026	Stryker	0	0	0	0	0	0	0
2026	Super Micro Computer	5	0	1	0	0	0	6
2026	Synchrony Financial	0	0	0	0	0	0	0
2026	Sysco	0	0	0	0	0	0	0
2026	Targa Resources	0	0	0	0	0	0	0
2026	Target	5	0	1	1	0	0	7
2026	Taylor Morrison Home	0	0	0	0	0	0	0
2026	TD Synnex	5	6	1	0	0	1	13
2026	Tenet Healthcare	0	0	0	0	0	0	0
2026	Tesla	0	0	0	0	0	0	0
2026	Texas Instruments	5	6	1	1	0	0	13
2026	Textron	0	0	0	0	0	0	0
2026	Thermo Fisher Scientific	5	0	1	1	0	0	7
2026	Thor Industries	5	0	1	0	0	0	6
2026	Thrivent Financial	5	0	1	0	0	0	6
2026	TIAA	5	2	1	0	0	0	8
2026	TJX	5	0	1	1	0	0	7
2026	Toll Brothers	0	0	0	0	0	0	0
2026	Tractor Supply	0	0	0	0	0	0	0
2026	TransDigm Group	5	0	1	0	0	0	6
2026	Travelers	0	0	0	0	0	0	0
2026	Truist Financial	0	0	0	0	0	0	0
2026	Tyson Foods	5	6	1	0	0	0	12
2026	U.S. Bancorp	5	0	1	0	0	0	6
2026	Uber Technologies	1	6	1	1	0	0	9
2026	Ulta Beauty	1	0	0	0	0	0	1
2026	Union Pacific	0	0	0	0	0	0	0
2026	United Airlines Holdings	0	0	0	0	0	0	0
2026	United Natural Foods	0	0	0	0	0	0	0
2026	United Rentals	1	0	1	0	0	0	2
2026	United States Steel	5	0	1	0	0	0	6
2026	UnitedHealth Group	5	0	1	0	0	0	6
2026	Universal Health Services	0	0	0	0	0	0	0
2026	Unum Group	0	0	0	0	0	0	0
2026	UPS	5	0	0	0	0	0	5
2026	US Foods Holding	1	0	1	0	0	0	2
2026	USAA	5	0	1	0	0	0	6
2026	Valero Energy	0	0	0	0	0	0	0
2026	Verizon Communications	0	0	0	0	0	0	0
2026	Vertex Pharmaceuticals	0	0	0	0	0	0	0
2026	Vertiv Holdings	5	0	1	0	0	0	6
2026	VF	5	0	1	0	0	0	6
2026	Viatis	5	0	1	0	0	0	6
2026	Visa	0	0	0	0	0	0	0
2026	Vistra	5	0	1	0	0	0	6
2026	Voya Financial	5	0	1	0	0	0	6
2026	Vulcan Materials	0	0	0	0	0	0	0
2026	W.R. Berkley	0	0	0	0	0	0	0
2026	W.W. Grainger	5	0	1	0	0	0	6
2026	Walgreens Boots Alliance	1	0	0	0	0	0	1
2026	Walmart	5	6	1	0	0	0	12
2026	Walt Disney	0	0	0	0	0	0	0
2026	Warner Bros. Discovery	5	6	1	1	0	0	13
2026	Waste Management (WM)	0	0	0	0	0	0	0
2026	Watsco	0	0	0	0	0	0	0
2026	Wayfair	5	6	1	0	0	0	12
2026	WEC Energy Group	1	0	0	0	0	0	1
2026	Wells Fargo	5	0	1	0	0	0	6
2026	Welltower	0	0	0	0	0	0	0
2026	WESCO International	0	0	0	0	0	0	0
2026	Western & Southern Financial G	0	0	0	0	0	0	0

2026	Western Digital	0	0	0	0	0	0	0
2026	Westinghouse Air Brake Techno	0	0	1	0	0	0	1
2026	Westlake	0	0	0	0	0	0	0
2026	Whirlpool	0	0	0	0	0	0	0
2026	Williams	0	0	0	0	0	0	0
2026	Williams-Sonoma	0	0	0	0	0	0	0
2026	Workday	5	6	1	1	0	0	13
2026	World Kinect	0	0	0	0	0	0	0
2026	Xcel Energy	1	0	0	0	0	0	1
2026	XPO	5	0	1	0	0	0	6
2026	Xylem	5	0	1	0	0	0	6
2026	Yum Brands	0	0	0	0	0	0	0
2026	Yum China Holdings	0	0	0	0	0	0	0
2026	Zimmer Biomet Holdings	5	0	1	0	0	0	6
2026	Zoetis	0	0	0	0	0	0	0